

Alaska Department of Fish and Game

Habitat Section
Southeast Region



192-30-10100-2016

ADDITION

Water body name:

Quad: Bering Glacier A-4

Upper Reach Latitude: 60.105565 **Longitude:** -142.493336

Lower Reach Latitude: 60.102739 **Longitude:** -142.496183

Survey date: 6/16/2024

Species & Lifestage: COP

Survey crew: NJ, GA, FC

Findings: We surveyed this cataloged stream using a backpack electrofisher and GPS and captured juvenile coho salmon. This stream provides low gradient fish habitat with large and small gravels. We ended the survey due to time constraints, but fish habitat appears to continue upstream (Table 1; Figures 1–4).

Recommendations: Extend upper extent of Stream No. 192-30-10100-2016 in the anadromous waters catalog (Figure 5).

Nomination: Pending

Table 1.–192-30-10100-2016 survey data.

Waypoint	Latitude	Longitude	Notes	Stream Width ft	Stream Substrate	Habitat Features	Gradient %	Sample Effort	Sample Results
295	60.101205	-142.496874	Large beaver dam right near confluence of cataloged main channel and river-left tributary. Looks like fish may be able to pass.		Fine Organic Small Gravel	Beaver Pond	1-2	Not Fished	
296	60.10365	-142.49588	Electrofishing upstream of upper cataloged extent. CO capture; advancing upstream.	20-25	Large Gravel Small Gravel		1-2	EF	2 CO
297	60.104143	-142.495071		15-20	Large Gravel		1-2	EF	2 CO
298	60.105568	-142.493359	Continued CO capture. Gradient remains low upstream; fish habitat continues further, likely another 1.5 mi before braiding out. Heading east to river-left tributary due to time constraints.	15-20	Large Gravel Small Gravel		1-2	EF	2 CO



Figure 1.–Juvenile coho salmon caught at waypoint 298.



Figure 2.—Upstream at waypoint 298.



Figure 3.—Downstream at waypoint 298.



Figure 4.—Beaver dam near the confluence at waypoint 295.

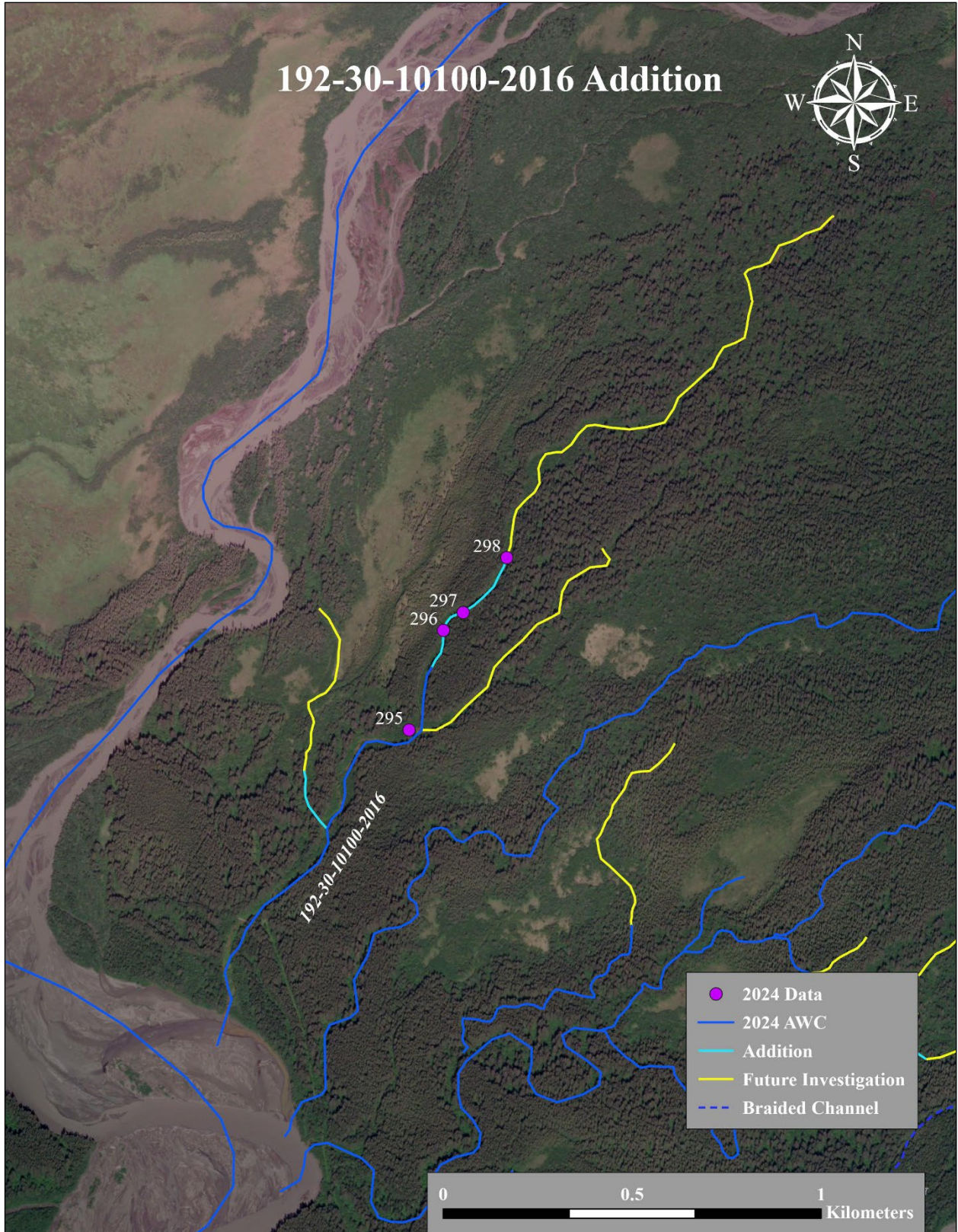


Figure 5.-192-30-10100-2016 addition map.